

# Health and Wellbeing Board Hertfordshire

Children, Young People and  
Families

Integrated Commissioning  
Priorities 2015/16



## What integrated commissioning will mean for children, young people and families in Hertfordshire

- When I need help I will be offered the right support at the right time, and in the right place
- I will be involved in making decisions about the service I and my family/carers are receiving and any proposed developments in the service area.
- Support that I receive will be evidence based, effective and empowering, building my resilience
- I will experience a joined up, seamless service and there will be fewer gaps or barriers between services.
- The support I receive will be tailored to meet my individual needs and the locality and community in which I live.
- The staff who work with me will be competent and appropriately skilled and they will talk to each other.
- I will be confident that money is being well spent and not wasted.
- I will receive a service that has been monitored for quality and safety.

### Introduction

Hertfordshire's Health and Wellbeing Board is ambitious for children and young people (CYP) in Hertfordshire. It recognises that, in order to achieve improved outcomes, there is a need to;

- consider the holistic support needs of the child or young person,
- design and develop services around children and young people and
- make the best use of the resources across partners and avoid duplication.

In order to deliver integration the partners have agreed to adopt a whole-system approach. In adopting this approach the partners recognise the ambition to develop a shared vision and consider the opportunity that would be realised from this for children, young people and their families.

Within this context of partnership working in Hertfordshire, integrated commissioning will encompass a variety of arrangements from single agency commissioning to aligned or pooled budgets within a shared governance framework and outcome focussed approach.

We recognise that one size commissioning will not fit all. It includes, but does not simply equate with, joint commissioning and pooled budgets. Different service areas will require different commissioning approaches within the continuum ranging from single agency commissioning to joint commissioning.

In light of the complexity of current arrangements and in recognition of the ambition to develop an overarching integrated commissioning strategy, phase one of this process will be for the partnership to agree that it will develop a shared quality

assurance framework for CYP commissioning, and a single integrated commissioning strategy within each of the three priority areas described below.

## Principles

Integrated commissioning for CYP and their families will be carried out within the following principles:

- We will work together to continually improve service outcomes and increased efficiency through reduced duplication, better use of available resources and by building on local service strengths.
- We will develop a common culture and language which promotes positive outcomes.
- Integrated planning and commissioning will support rather than replace statutory responsibilities, with clear lines of accountability and strategic responsibilities resting with individual agencies.
- We recognise the importance of universal and preventative services in meeting the needs of children and their families and we will ensure that families can access the most appropriate level of service as needs emerge.
- We will undertake all planning and decision making activity as part of the commissioning process, working with stakeholders to take a whole family/whole-system approach.
- We will work together in partnership with children, young people, parents/carers and local communities, at all stages of the commissioning cycle.
- We will ensure that all commissioning processes, including tendering and procurement, are transparent and in line with good practice and legal requirements.
- We will ensure our commissioning decisions are justifiable and based on relevant expertise and need, evidenced through robust data collection and the Joint Strategic Needs Assessment (JSNA).
- We will develop information sharing mechanisms to be available across the whole pathway.

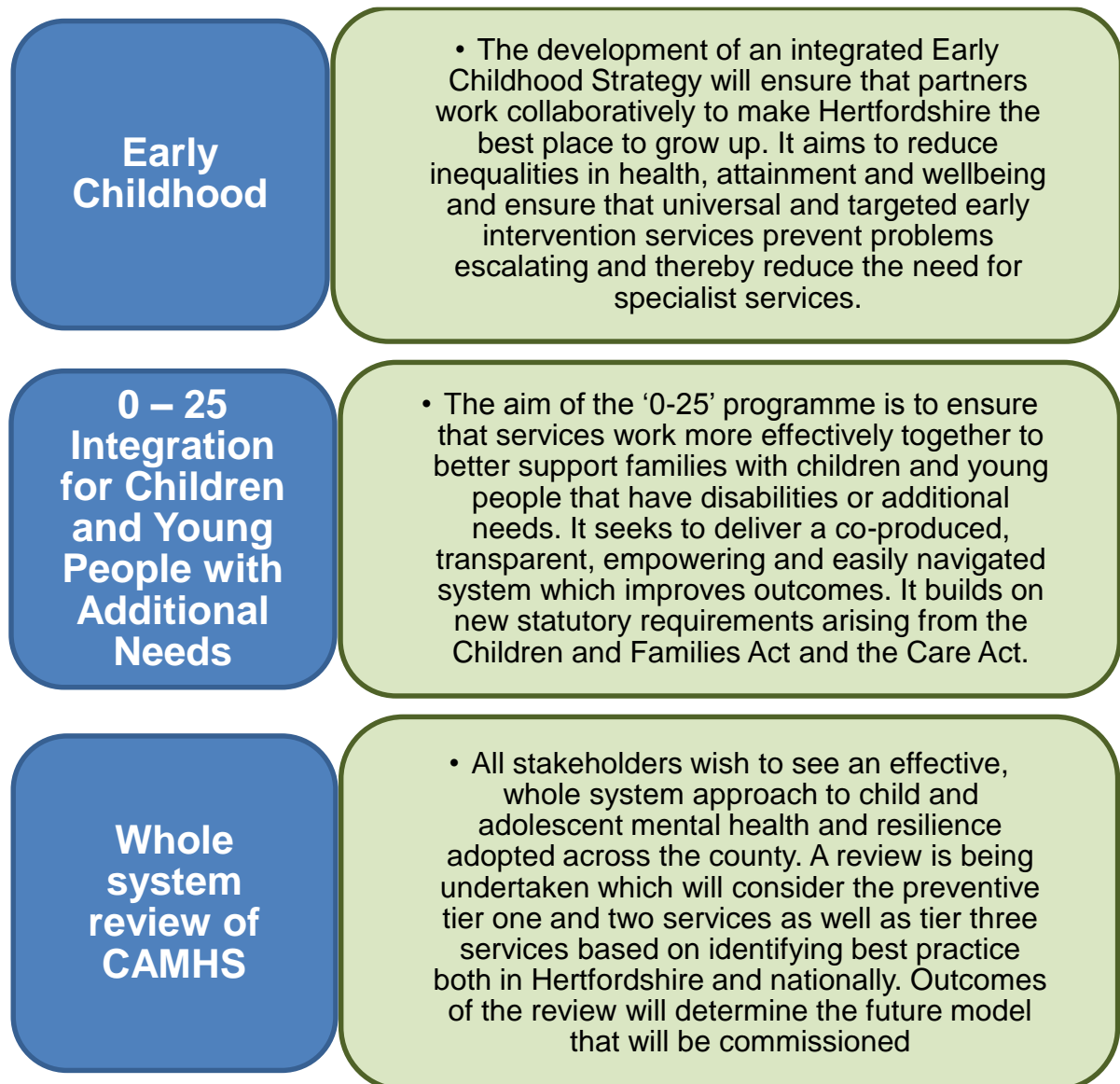
## Priorities for Integration

The Health and Wellbeing Board have identified three core priorities for Integrated Commissioning for CYP in 2015. These are Early Childhood, 0-25 Integration for Children and Young People with Additional Needs, and a whole system review of Child and Adolescent Mental Health Services (CAMHS); all to be considered within a whole family approach.

The partnership has agreed that it will develop a shared quality assurance framework and a single, integrated commissioning strategy within each of these priority areas.

This work will inform the development of a whole-system, best practice model for Hertfordshire and an overarching Integrated Commissioning Strategy to inform future needs, options, decisions and strategies for partners responsible for commissioning and delivering children and family services. This will run alongside the development of the new Health and Wellbeing Strategy.

The three priorities for integrated commissioning are listed below with a short description of the outcomes the partnership is looking to achieve.



In addition to working on the above key priorities, partners will continue to work collaboratively in other areas including young carers, speech and language therapy, occupational therapy and the health of Children Looked After.

The partners will also look for new opportunities to develop an integrated commissioning approach such as within the Family Safeguarding project. All these

areas will be considered and incorporated within the Integrated Commissioning Strategy ensuring that activity, going forward, is timetabled and delivered in line with the same assurance and core principles.